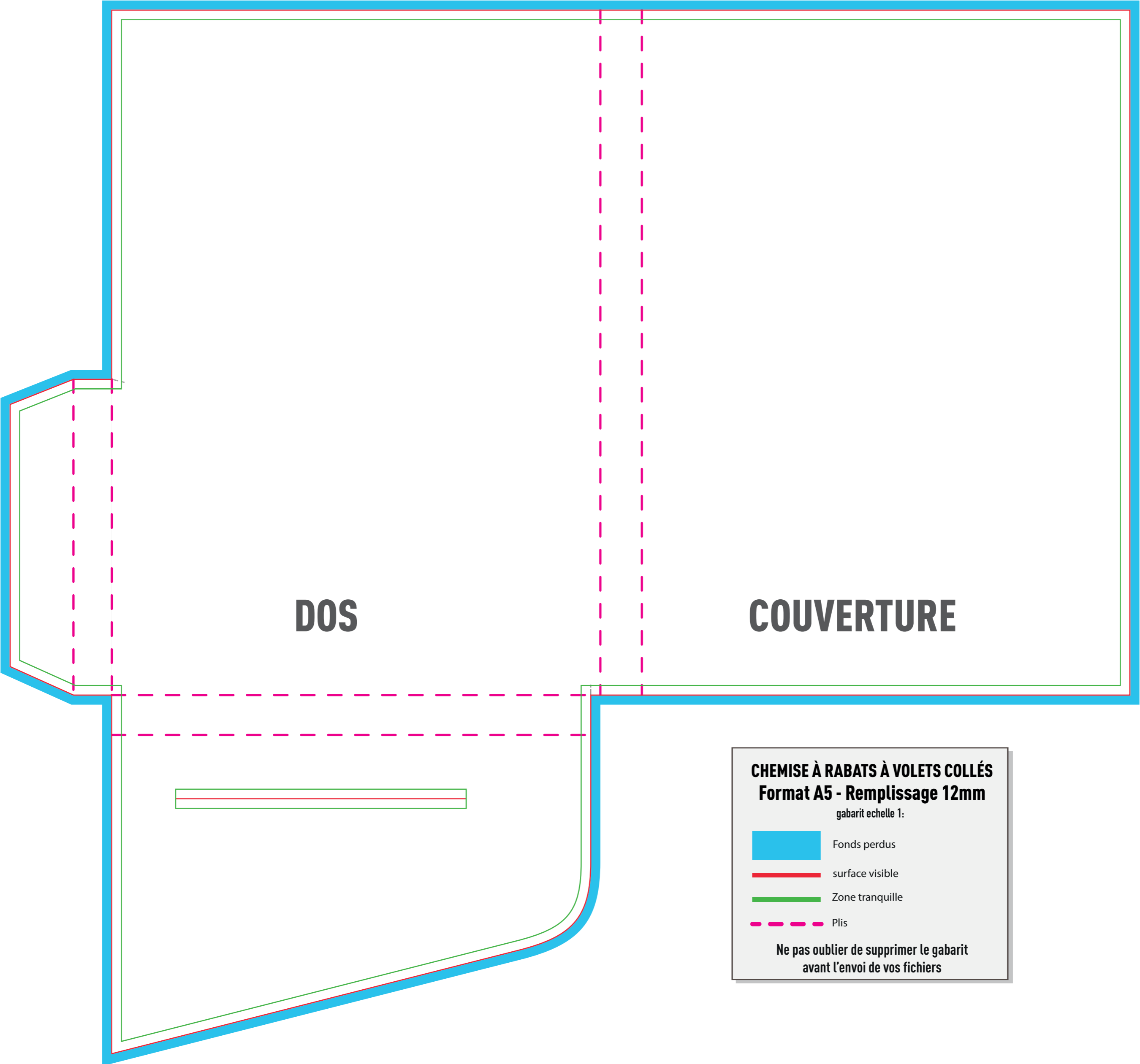


**PARTIE NON VISIBLE
APRÈS MONTAGE**

The image shows a technical drawing of a mechanical part, possibly a bracket or a housing. The part is shaded in light gray and has a blue outline. It features a large rectangular section on the left and a more complex, angular section on the right. The right section has a vertical slot and a horizontal slot. Dashed red lines indicate assembly lines or hidden edges. A label in the center of the right section reads 'PARTIE NON VISIBLE APRÈS MONTAGE'. The drawing is enclosed in a green border, and there is a blue border around the entire image.



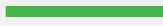



DOS

COUVERTURE

**CHEMISE À RABATS À VOILETS COLLÉS
Format A5 - Remplissage 12mm**

gabarit echelle 1:

-  Fonds perdus
-  surface visible
-  Zone tranquille
-  Plis

**Ne pas oublier de supprimer le gabarit
avant l'envoi de vos fichiers**